



10GbE Application Assurance.
Maximum Bandwidth Beyond
625MHz.
Component Compliant ANEXT
Performance.
PoE and PoE+ Ready.

FEATURES

- Category 6a ANEXT component compliant.
- IDC pair splitting tower allows for minimum disruption of cable twist.
- HPW icon compatible.
- High performance BeCu contacts.
- Backward compatible to Category 6, 5e, 5 and 3.

SPECIFICATIONS

Panel Metal

- ◆ 14 ga. steel construction.
- ◆ Durable, powder coat finish.
- ◆ Rolled edge construction.
- ◆ Dimensions and mounting holes per EIA-310-D.

Panel Jacks

- ◆ Contact material: Beryllium copper.
- ◆ 2000+ mating cycles.
- ◆ Accepts FCC 6-position plug.

IDC Construction

- ◆ Material: Phosphor bronze nickel plating.
- ◆ Accommodates 22 to 26AWG/solid.

STANDARDS/LISTINGS/VERIFICATIONS

- ANSI/TIA-568-B.2-10*.
- IEEE 802.3af (PoE) and IEEE 802.3at (PoE+).
- Exceeds IEEE 802.3an 10GBASE-T link segment requirements.
- IEEE 802.3an 10-Gigabit Ethernet verified.
- 3rd party verified.
- UL Listed 1863.
- FCC part 68.5, subpart F compliant.
- ISO/IEC 60603-7.
- ISO 11801 (second edition) Class E compliant.

* Proposed draft.

HUBBELL
NextSpeed

**Ascent 10GbE
Patch Panels**

4-S ANEXT Elimination Techniques.

1-Punch Termination.



Third Hand Location Pin.

NEXTSPEED® Ascent 10GbE is a tuned system of structured cabling components designed and center balanced to work together delivering reliability and headroom that exceeds 10GbE requirements.

To suppress ANEXT at all points, the **NEXTSPEED®** Ascent 10GbE patch panel features adapters that utilize our **4-S Elimination Techniques:**

- SHIELD** The adapter housing has a special ANEXT suppression coating.
- SEPARATE STAGGER SWAP** 110 towers are separated to control crosstalk. Ports are staggered to optimize cable lay. Cable pairs are swapped to further mitigate interference.

NEXTSPEED® Ascent 10GbE patch panels are the highest performance panels in the industry. Utilizing a rugged, rolled edge construction, the **NEXTSPEED®** Ascent 10GbE panel provides ultimate rigidity for installation and termination. The P6A panel features a unique third hand locator pin which allows the installer to position and leave the P6A panel in its correct rack space, freeing hands for a fast, reliable installation.

APPLICATIONS SUPPORTED

- ▲ Data centers 10GbE between devices:
 - Server to switch.
 - Server to server.
 - Server to storage.
- ▲ High-performance cable applications.
 - Active zone cabling.
 - Distributed cabling.
- ▲ PoE Applications
 - WAP's.
 - Security Appliances.
 - VoIP.
- ▲ Bandwidth intensive processing:
 - Video on demand (VOD).
 - Real-time security surveillance.
 - High-resolution 3D modeling.
 - On-line document publishing.
 - Broadband video.

ORDERING INFORMATION

NEXTSPEED® Ascent 10GbE Patch Panels



NEXTSPEED® Ascent 10GbE patch panels are available in silver and black, 24-, 48-, and 96-ports and are supplied with labeling for T568B wiring. Panels can be converted to T568A with a simple flip of the universal wiring label.

Delivery: 1 patch panel, 1 universal wiring insert, clear plastic label holders and mounting hardware.

Ports	Height	Width	Color	Catalog No.
24	1.75" (45)	19" (483)	Black	P6A24U
48	3.50" (89)	19" (483)	Black	P6A48U
96	7.00" (178)	19" (483)	Black	P6A96U
24	1.75" (45)	19" (483)	Silver	P6A24US
48	3.50" (89)	19" (483)	Silver	P6A48US
96	7.00" (178)	19" (483)	Silver	P6A96US

ACCESSORIES

Rear Cable Management Bars

Description	Catalog No.
Clips to rear of panels	PCBLMGT
Screws to rear flange of 19" rack	MCCSWB19

NEXTSPEED® Ascent 10GbE Jacks

Unit Package:	1 per Bag	
Order Qty.:	Carton of 25	
Color	Wiring	Catalog No.
Black	Universal	HXJ6ABK
Blue	Universal	HXJ6AB
Gray	Universal	HXJ6AGY
Office White	Universal	HXJ6AOW
Orange	Universal	HXJ6AOR
White	Universal	HXJ6AW



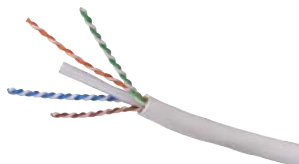
NEXTSPEED® Ascent 10GbE Patch Cords

Catalog No. **PC6AGYXX**
 Color: Gray
XX = Length: '03' = 3', '05' = 5',
07 = 7', '10' = 10', '15' = 15', '20' = 20'.



NEXTSPEED® Ascent 10GbE, 4-Pair, UTP Cable

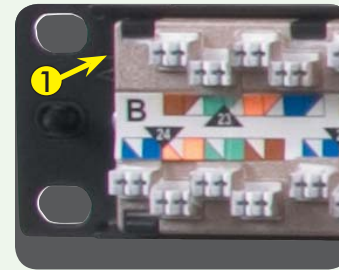
Color	Catalog No. Riser Spool	Catalog No. Plenum Spool
Blue	C6ASRB	C6ASPB
Gray	C6ASRGY	C6ASPGY
White	C6ASRW	C6ASPW
Yellow	C6ASRY	C6ASPY



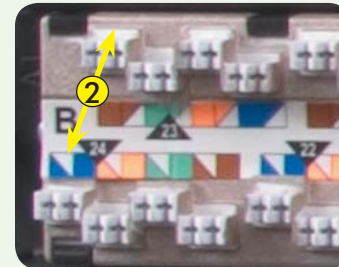
ANEXT Suppression

ANEXT Alien Crosstalk - Coupled signal on a cable/port arising from signal or signals from different neighboring cables/ports.

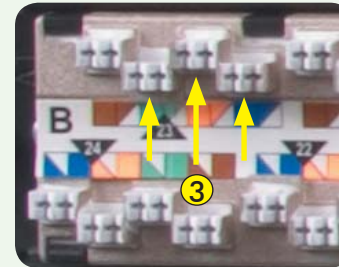
1. **Shield:** rear of adapter coated conductively to eliminate crosstalk.



2. **Separate:** distance between upper and lower IDCs maximized to reduce crosstalk, also helps with termination.



3. **Stagger:** tower formation offset pair-to-pair and port-to-port.



4. **Swap:** color code order reversed to minimize crosstalk.



Hubbell Premise Wiring

HUBBELL INCORPORATED (Delaware)
 14 Lord's Hill Road • Stonington, CT 06378-0901 • (860) 535-8326 • 800-626-0005
 Fax: (860) 535-8328 • Internet site: <http://www.hubbell-premise.com>

Worldwide Locations

Hubbell Premise Wiring, Asia Pacific	852-2836-7131	Fax: 852-2836-7132	Hubbell Premise Wiring, Latin America	305-408-4501	Fax: 305-408-8201
Hubbell Canada Inc.	905-839-1138	Fax: 905-839-9108	Hubbell de Mexico, S.A. de C.V.	(5255) 9151-9999	Fax: (5255) 9151-9989
Hubbell Premise Wiring, Central America	506-309-4158	Fax: 506-260-1616	Hubbell Premise Wiring, Middle East	971-4-393-4192	Fax: 971-4-393-4194
Hubbell Premise Wiring, China	8621-6309-0119	Fax: 8621-6309-0122	Hubbell-Taian Co., Ltd., Taiwan	886-2-2522-1862	Fax: 886-2-2522-1872
Hubbell Premise Wiring, Colombia	571-245-8940	Fax: 571-340-0925	Hubbell Premise Wiring, Turkey	90-216-313-5016	Fax: 90-216-414-8148
Hubbell Premise Wiring, Europe	44-01283 500500	Fax: 44-01283 500400	Hubbell Premise Wiring, Venezuela	58-416-680-7453	Fax: 58-281-274-7900
Hubbell Int'l. Inc., Korea Branch	82-2-(0)2607-1363	Fax: 82-2-(0)2603-7386			